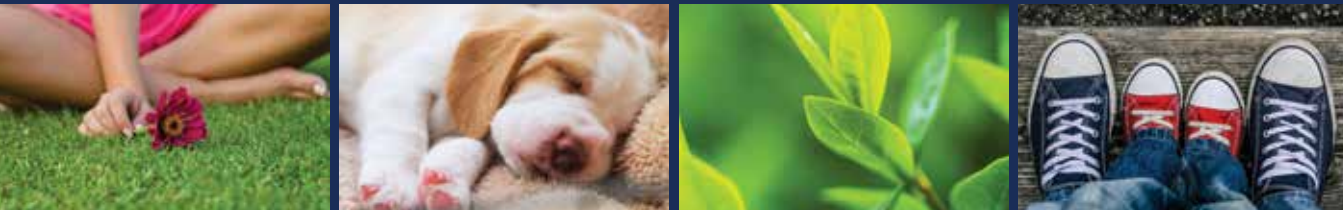




LENOX PLUS
SERIES





Remarkable Windows, Remarkable Story.

Synergy Windows has specialized in providing the highest quality energy-efficient windows and doors for the last 12 years. Our top quality, professional grade windows and doors enhance every aspect of your home, including significantly lowering your overall energy bill and improving the curb appeal, while increasing the overall value of your home.

This makes choosing our windows and doors one of the best home improvement decisions you could ever make.

Our company is built on positive reviews and referrals which is how we continue to grow as a national company. Most businesses focus on traditional advertising methods which are not relationship driven, but product driven. Synergy Windows believes that focusing 100% on quality, integrity, customer service and going above and beyond for our customers will naturally separate us from our competitors.

The word "Synergy" is defined as the interaction or cooperation of two or more organizations, substances, or other agents to produce a combined effect greater than the sum of their separate effects. We achieve this "Synergy" bringing together high quality products and outstanding customer service.

It is not our intention to satisfy you or even please you. Our intention is to impress you by being relentless in keeping our word, having integrity, following through and leaving a positive imprint on your life.

We look forward to building that "Synergy" together with you.





Lenox Plus Series

Premium Fusion-Welded Windows

- Enhanced cavity foam insulation further maximizes the energy efficiency. This innovative technology incorporates carbonized foam liners in select channels of the head, jamb and sill to create a highly protective thermal barrier against energy loss.
- The beauty of our narrowline frame and sashes is subtle and substantial at the same time. The sleek design is visually clean and contemporary, with a larger glass area for exceptional daylighting and outside viewing. And beneath the elegance? Internal chambers are meticulously engineered for structural integrity and enhanced energy efficiency.
- Stylish and strong, this low-profile secure locking hardware features an indicator that tells you if your windows are left unlocked. But the true beauty is its end-of-throw cam shift locking action, expertly constructed for increased protection.
- The polyurethane fiberglass reinforcement allows for secure mounting of hardware and the non-conductive material also reduces the transfer of energy for superior thermal performance.¹
- The Super Spacer System with a structural foam design helps block the conduction of heat at the edge of the glass for superior thermal performance and longevity.
- The true sloped sill of our Lenox Plus Window elevates both the appearance and performance with its smooth, uniform design. The true sloped sill is expertly crafted to provide a highly efficient drainage system that promotes water runoff without the use of weep holes.²
- Traditional sloped sill designs can allow the sash to bow during powerful winds, but with our interlocking sash-to-sill technology, the sash is channeled firmly into the window frame for a unified wall of strength. Combined with three layers of weatherstripping, it delivers unmatched protection, as well as peace of mind.

The benefits distinction here is three-fold: protection from air and water infiltration, increased structural stability and enhanced beauty. The integrated telescoping sill dam effortlessly blends strength with style.

Improved form and functionality is the focus of our screen bulb seal. The compression bulb aids in the installation and removal of the extruded aluminum screen. The snug fit also eliminates light penetration between the screen and frame and helps block insect access.³

Plus these additional features:

- Fully fusion-welded frame and sash corners create superior strength.
- Airtight insulating chambers enhance thermal performance and durability.
- Multi-layer weatherstripping helps block energy loss and protects against inclement weather.
- Dual vent latches for limited and convenient opening of the window for ventilation.
- Hidden screen track creates a clean-line design for enhanced visual appeal; half screens are standard, optional full screens available.
- For enhanced appearance and ease of installation, four additional options also are available.



Stucco Fin



1" Set Back Nail Fin



1-3/8" Set Back Nail Fin



1-3/8" Set Back Nail Fin with J-channel adaptor



Your home is about to become even more exceptional. Classically styled and supremely durable, Lenox Plus Series Windows will dramatically enhance the appearance of your home while reducing your annual energy costs. Constructed with premium-grade extrusions, the narrowline sash and handsome frame combine eye-catching good looks with outstanding protection and year-round comfort.

LENOX PLUS DOUBLE-HUNG GLASS PERFORMANCE COMPARISON*

	U-Factor	SHGC
Clear Glass	0.46	0.57
ClimaTech	0.29	0.30
ClimaTech ThermD	0.28	0.30
ClimaTech Elite	0.29	0.21
ClimaTech TG2 Plus Elite	0.21	0.19
ClimaTech TG2 ThermD	0.22	0.26

*Whole window values double-strength glass.

¹ Double-hung base model will automatically be upgraded to ST (steel reinforcement) for all units ordered in excess of 48" wide or 84" high.

² For larger size windows or to meet specific DP/PG ratings, optional weeps/performance package must be ordered.

³ Available only with the full screen option.



Double-Hung and Sliding Windows

The Most Popular Window Choice in American Architecture

Double-hung windows are the perfect window for traditional beauty and exceptional performance. The tilt-for-cleaning benefit makes them a favorite among homeowners. Designed with smooth site lines, sliding windows offer a functional style without sacrificing an aesthetic appeal. Sleek sashes slide horizontally for easy opening and closing while creating an unobstructed view of the outdoors and letting natural light shine through.

- Narrowline frame and sashes with fusion-welded corners for added strength and rigidity.
- Integrated sash-to-sill interlock creates a super-tight seal against air infiltration, providing added comfort.
- True sloped sill forces water to drain to the exterior of the window. (double-hung window)
- Non-conductive, fiberglass reinforcement in the meeting rails allows for secure mounting of hardware and improves energy efficiency.
- Constant force balance system ensures effortless operation of the sash. (double-hung window)
- Sliding window sashes glide on a nylon-encased dual brass roller system for smooth operation.
- Hidden screen track for clean lines and added beauty.



Casement and Awning Windows

A Big, Beautiful View with Maximum Airflow

Casements are perhaps the most versatile window style. Their uninterrupted sightlines ensure maximum viewing area, while their crank open/close operation provides ease-of-use and maximum energy efficiency. Great style comes to any interior design when awning windows and fixed-lites are combined. Your windows will reflect and enhance your home's beauty, and they're built to last a lifetime.

- Beveled exterior sash design creates the appearance of a larger glass area with an attractive slimline look.
- Step-down frame with three weatherstripping seals provides a tight seal during inclement weather.
- Heavy-duty, state-of-the-art hinge system provides easy operation from inside the home.
- Positive crank mechanism ensures easy operation when opening and closing the sash.
- A dual locking system on each side of the window. (awning window)
- Multi-point locking system ensures a tight seal and increased comfort.
- Multiple lite configurations available in a single mainframe.



Sliding Patio Doors

Visually Exciting and Powerfully Built

Whether you have a yard, deck or terrace, our sliding patio doors extend your room's ambiance, creating an open, expansive feeling. The expanded glass area provides added light and its reliable sliding convenience extends your enjoyment year-round.

- Three distinctive styles: Contemporary, Classic and French.
- Mainframe and sash feature a double-wall design and multi-chambered construction for added strength.
- Dual internal/external weatherstripping on the sash ensures optimal energy efficiency.
- Precision-engineered tandem roller system ensures easy and quiet door operation.
- Heavy-duty extruded aluminum screen features four adjustable rollers for smooth gliding.
- Available in 2-, 3- and 4-panel configurations.
- Integrated mini blinds offer convenient sunlight and privacy control. (optional)
- Choose from a variety of solid colors, hardware finishes and grid patterns to complement your Synergy Windows.



Classic



French



Contemporary

Design Options

Exceptional Style for Every Home

Create elegance with our beautifully styled decorative options. These iconic colors remain popular from generation to generation with their beautiful appearance and harmonious appeal.

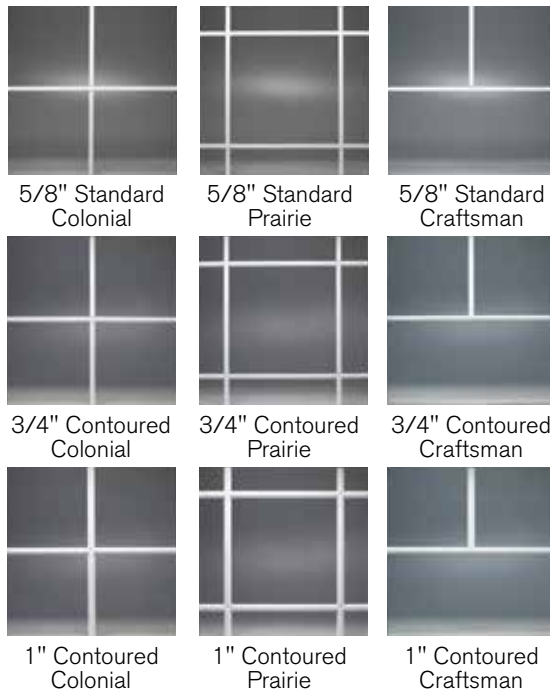
Color Collection

Beauty and vision, performance and strength – it all comes together in Lenox Plus' assortment of color selections. Customize the appearance of your windows with our beautifully styled decorative options.



Grid Options

Decorative grids lend an added measure of style and dimension to your windows. All grids are enclosed within the insulated glass unit for easy cleaning. Select a grid profile and pattern to achieve your ideal finished look.



† Extruded solid color.

†† Black, Architectural Bronze and Silver exterior finishes are available with a White or Almond interior only.

Obscure Glass

Obscure glass styles offer privacy for bathrooms and other areas of your home without blocking the natural light.

